

Press Release

Friday 17 June 2022

[DOWNLOAD IMAGES](#)

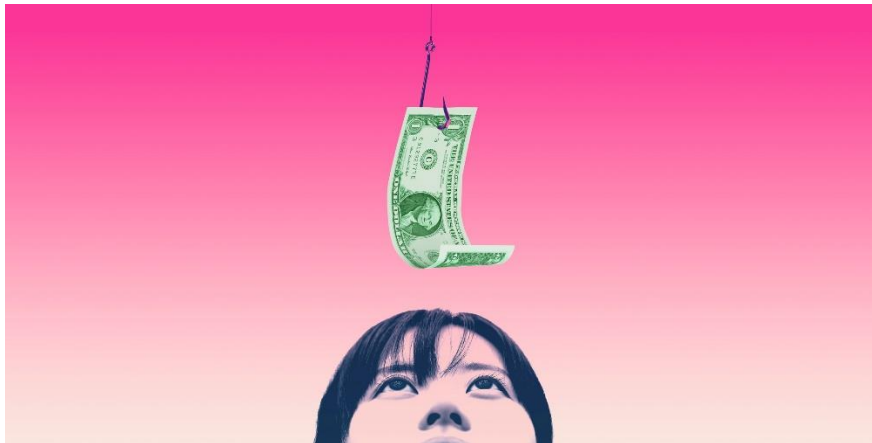
T: [@LyricHammer](#) | I: [/LyricHammersmith](#) | F: [/LyricHammersmith](#)

Lyric Hammersmith Theatre, English Touring Theatre (ETT) and Sheffield Theatres present  
**THE GOOD PERSON OF SZECHWAN**

Written by Bertolt Brecht

Adapted by Nina Segal

Directed by Anthony Lau



- In its 80<sup>th</sup> anniversary, a brand new adaptation and co-production of Brecht's *The Good Person of Szechwan* commissioned by ETT and co-produced by Sheffield Theatres, ETT and Lyric Hammersmith Theatre will play in London at the **Lyric Hammersmith Theatre** from **15 April to 13 May 2023**, following its opening run at Sheffield Theatres from 11 March to 01 April 2023.
- Tickets for the Lyric are on sale now at [www.lyric.co.uk](http://www.lyric.co.uk)

Lyric Hammersmith Theatre, ETT and Sheffield Theatres today announce a new co-production of Bertolt Brecht's *The Good Person of Szechwan*, written by Nina Segal (*In the Night Time [Before The Sun Rises]*), directed by Sheffield Theatres RTYDS Associate Artistic Director Anthony Lau (*Anna Karenina*), and commissioned by ETT due to open in Spring 2023.

The production will run at **Sheffield Theatres** from **11 March to 01 April** with opening night on **15 March** and will transfer to the **Lyric Hammersmith Theatre**, London from **15 April to 13 May** with opening night on **Thursday 20 April 2023**. Casting and the full creative team will be announced in due course.

**Rachel O’Riordan, Artistic Director of Lyric Hammersmith Theatre, said:**

*“I am delighted to be partnering with English Touring Theatre (ETT) and Sheffield Theatres on this ambitious new vision for Brecht’s extraordinary play. Nina Segal is a writer with huge heart, and I am so excited for what she and director Anthony Lau reimagine for this extraordinary story of human resilience and the power of compassion. Lyric audiences will be thrilled to see this ambitious, large-scale production on our beautiful stage in West London. With a visionary creative team, Brecht’s passionate, humane and moving portrait of a community will be something we can all relate to.”*

**Anthony Lau, RTYDS Associate Artistic Director of Sheffield Theatres, said:**

*“As the cost of living rises to dangerous levels and the number of billionaires in the world grows, Brecht’s play about capitalism’s relationship with morality is fiercely resonant. He examines these ideas with humour and playfulness, to better shed light on the tragedy and seriousness of a world where everyday kindness is disintegrating.*

*I am hugely excited to revive Brecht’s masterpiece alongside Nina Segal, the adaptor of this new version, and Georgia Lowe, the designer. They are both artists whose imagination, rigour and sense of mischief will inject new impetus to this production.*

*Performed by a company of actors predominantly of East Asian heritage, audiences can look forward to a freewheeling story of gods, goodness and greed.”*

**Richard Twyman, Artistic Director and CEO of ETT, said:**

*“This production coincides with the 80th anniversary of Brecht’s original, so it is significant that it will be the first time in the UK that it is led by East Asian creatives and with a predominantly East Asian cast. We first started working on the development of this project almost five years ago, but it is one of those prescient plays that has grown in relevance since. It’s one of Brecht’s funniest, most insightful and timeless pieces of work, that explores the pressures on morality in a capitalist system, the cost of living, inequality, corruption, and power under patriarchy.*

*Brecht is a mischievous, playful writer who pokes fun at power and I know that Nina, Anthony and their team are going to make this a fun and insightful night out. We’re delighted to be collaborating on this historic production with our partners at Sheffield Crucible & Lyric Hammersmith Theatre.”*

*‘What is the cost of being good?’*

Three gods search for just one honest person on earth to justify humanity’s existence. Finding Shen Te, penniless but principled, they reward her with a life-changing amount of cash. But starting her own business in a money centred, unequal society, her fortune soon turns to frustration as the more kindness she shows, the more complicated life becomes.

***The Good Person of Szechwan*** is written by **Bertolt Brecht**, adapted by **Nina Segal**, directed by **Anthony Lau**, design by **Georgia Lowe**, lighting design by **Jessica Hung Han Yun**, and casting by **Jacob Sparrow**.

### **Creative Team Biographies**

**Bertolt Brecht (Writer)** the German-born playwright, poet and director, Bertolt Brecht was born in Augsburg, Germany in February 1898. Following a period working as assistant to Max Reinhardt at the famous Deutsches Theater, he established himself as a playwright and director

during the 1920s and early 1930s with plays such as *Baal*, *Man is Man*, *The Threepenny Opera* and *The Mother*. It was during this period that he started to form his theories of epic theatre which informed so much of his later work.

In 1930, the premier of Brecht and Weill's *The Rise and Fall of the City of Mahogony*, caused a riot as the increasingly influential Nazi party objected to its morality and critical tone. When Hitler came to power in 1933, Brecht and his wife, actress Helene Weigel, left Germany and lived in a number of European cities before eventually settling in the USA in 1941 where he remained until 1947. During the war years, he wrote many of his best known plays, including *The Life of Galileo*, *The Caucasian Chalk Circle*, *Mother Courage and her Children* and *The Resistible Rise of Arturo Ui* and also published an anthology of poetry, *Poems in Exile*. He returned to Europe in 1947 and shortly after his arrival formed the Berliner Ensemble. His post-war plays include *Mr Puntilla and his Man Matti* and an adaptation of Sophocles' *Antigone*.

Brecht died in Berlin on 14th August 1956 and remains a hugely influential theatre practitioner throughout the world.

**Nina Segal (Adaptor)** is a playwright and TV writer. Her play *In The Night Time (Before The Sun Rises)* was produced at the Gate to critical acclaim. Nina is currently under commission to Soho Theatre, ETT, the Rose Theatre, the RSC and The Unicorn Theatre. Her most recent play, *O, Island!*, was shortlisted for the prestigious George Devine Award. For TV, Nina wrote on *Hanna Series 2*, for NBC and Amazon. She has two script commissions with ITV Studios and is developing other TV projects in the UK.

**Anthony Lau (Director)** is RTYDS Associate Artistic Director of Sheffield Theatres. He was previously Laboratory Associate Director at Nuffield Southampton Theatres and trained as a director at LAMDA and at the National Theatre Studio. For Sheffield Theatres, credits include: *ROCK*, *Anna Karenina* and *The Band Plays On* (Co-Director). Other credits as Director include: *The Shadow Factory* and *Juicy and Delicious* (Nuffield Southampton Theatres); *A Better Man* and *The Cherry Orchard* parallel project (Young Vic); *The Common Land* (Rose Theatre Kingston); *Dreaming in America* (Shoreditch Town Hall); *Still Life/Red Peppers* (Old Red Lion); *The Taste of Us* (HighTide Festival); *I am a Camera* (Southwark Playhouse).

- ENDS -

Press contact:

Burte Tsogbadrakh: [burte.tsogbadrakh@lyric.co.uk](mailto:burte.tsogbadrakh@lyric.co.uk)



Supported by  
**ARTS COUNCIL  
ENGLAND**



### Notes to Editors

IMAGES available to download [here](#)

### About Sheffield Theatres

**Sheffield Theatres** is home to three theatres: the Crucible, the Sheffield landmark with a world-famous reputation; the Studio, an intimate, versatile space for getting closer to the action; and the gleaming Lyceum, the beautiful proscenium that hosts the best of the UK's touring shows.

Having held the title 'Regional Theatre of the Year' on four separate occasions, Sheffield Theatres is the ticket to big names and local heroes, timeless treasures and new voices. Committed to investing in the creative leaders of the future, Sheffield Theatres' dedicated talent development hub, The Bank, opened in 2019 to support a new cohort of emerging theatre-makers every year.

In November 2021, the Crucible and Studio theatres celebrated their 50<sup>th</sup> anniversary. The anniversary season includes a theatrical first, with Chris Bush's new *trilogy Rock / Paper / Scissors* to be performed across all three venues with the same cast at the same time, plus the highly-anticipated return of Sheffield-set new musical *Standing at the Sky's Edge*. With music and lyrics by Mercury Prize nominated Richard Hawley, the production won the 2020 South Bank Sky Arts Award for theatre and was named Best Musical Production at the 2019 UK Theatre Awards.

Sheffield Theatres has a reputation for bold new work. Dazzling adaptation *Life of Pi*, won four awards at the 2019 UK Theatre Awards, 'Achievement in Technical Theatre' at the Stage Awards and 'Best New Play' at the WhatsOnStage Awards. The show opened in the West End in 2021. This success follows the phenomenal Sheffield musical *Everybody's Talking About Jamie* which started life at the Crucible in 2017, before transferring to the West End, embarking on a UK tour and being turned into a feature film released simultaneously to 244 countries on Amazon Prime in September 2021.

Crucible Lyceum Studio 55 Norfolk Street, Sheffield, S1 1DA

[www.sheffieldtheatres.co.uk](http://www.sheffieldtheatres.co.uk)

### About ETT

ETT (English Touring Theatre) is a UK based international touring company which creates productions of outstanding quality, imagination, and ambition; work which interrogates and celebrates contemporary England and reflects the diversity of our nation. ETT make theatre and digital work that is imaginative, responsive, and alive: sparking dialogue and fostering connectivity. We are proud to tour shows that reach the widest possible range of audiences across the UK and beyond, engaging in a national and global conversation. ETT won the UK Theatre Awards Best Touring Production in 2014, 2015, 2016 and Best Play Revival in 2019.

[www.ett.org.uk](http://www.ett.org.uk)

Twitter: @weareETT  
Instagram: EnglishTouringTheatre  
YouTube: ETT

### Listings

A Lyric Hammersmith Theatre, ETT and Sheffield Theatres production  
Commissioned by ETT

#### *The Good Person of Szechwan*

By Bertolt Brecht

Adapted by Nina Segal

Directed by Anthony Lau

#### Lyric Hammersmith Theatre

Lyric Square, King Street, London, W6 0QL

**Dates:** Saturday 15 April to Saturday 13 May 2023

**Free First Night:** Saturday 15 April, 7.30pm

**Press Performance:** Thursday 20 April, 7pm

**Performance Schedule:** Monday to Saturday at 7.30pm, plus Wednesday matinees at 1.30pm and Saturday matinees at 2.30pm

**Audio Described Performance:** Tuesday 02 May, 7.30pm

**Open Captioned Performance:** Thursday 04 May, 7.30pm

**BSL Interpreted Performance:** Tuesday 09 May, 7.30pm

**Box office:** 020 8741 6850

[www.lyric.co.uk](http://www.lyric.co.uk)

Tickets from £10

Twitter: [@LyricHammer](https://twitter.com/LyricHammer)

Instagram: [/LyricHammersmith](https://www.instagram.com/LyricHammersmith/)

Facebook: [/LyricHammersmith](https://www.facebook.com/LyricHammersmith/)

#TheGoodPersonOfSzechwan

### **Sheffield Theatres**

Crucible Lyceum Studio 55 Norfolk Street, Sheffield, S1 1DA

**Box office:** 011 4249 6000

[www.sheffieldtheatres.co.uk](http://www.sheffieldtheatres.co.uk)

**Dates and Location:** Crucible Theatre, Saturday 11 March to Saturday 01 April 2023

**Press performance:** Wednesday 15 March 2023, 7pm