



Lyric Hammersmith Theatre Social Story

A visual guide to attending a
Relaxed Performance or Chilled Performance
in the Main House

I am going to the Lyric Hammersmith Theatre
to see a show.

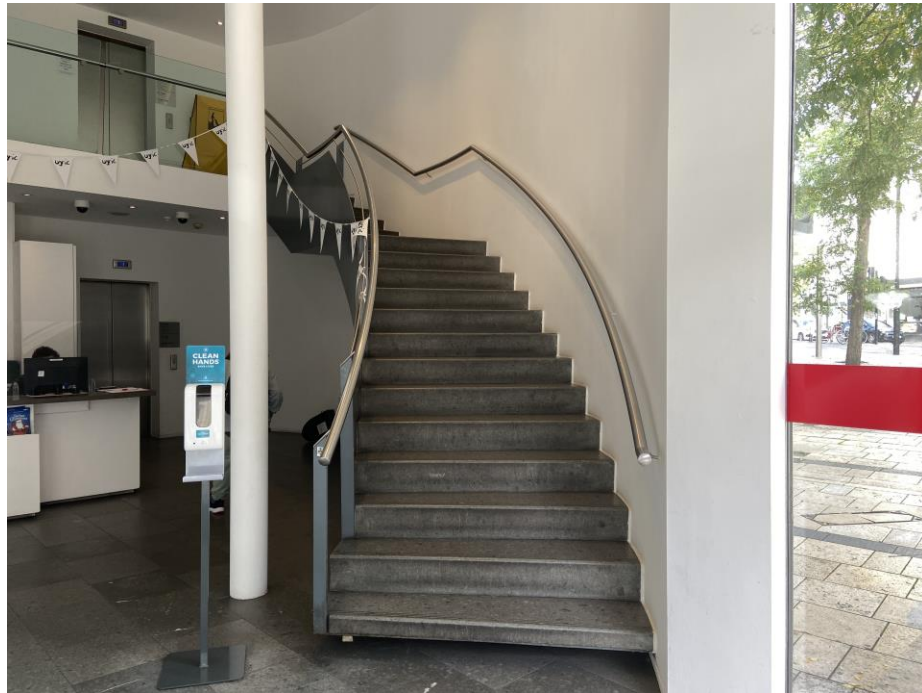


I will walk inside the theatre through the front door.
I will enter Box Office which looks like this:



The Box Office is where I can buy a ticket or ask a question.

I will have to go up 2 floors to get to the theatre bar and entrance.
I can either take the stairs or use the lift.

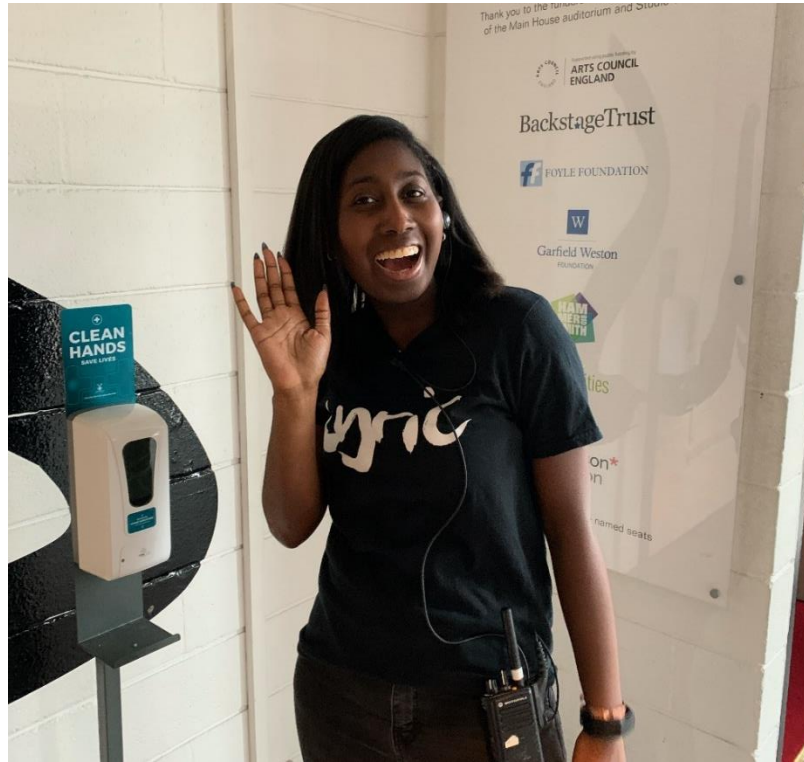




There will be lots of
people going to see the
show.

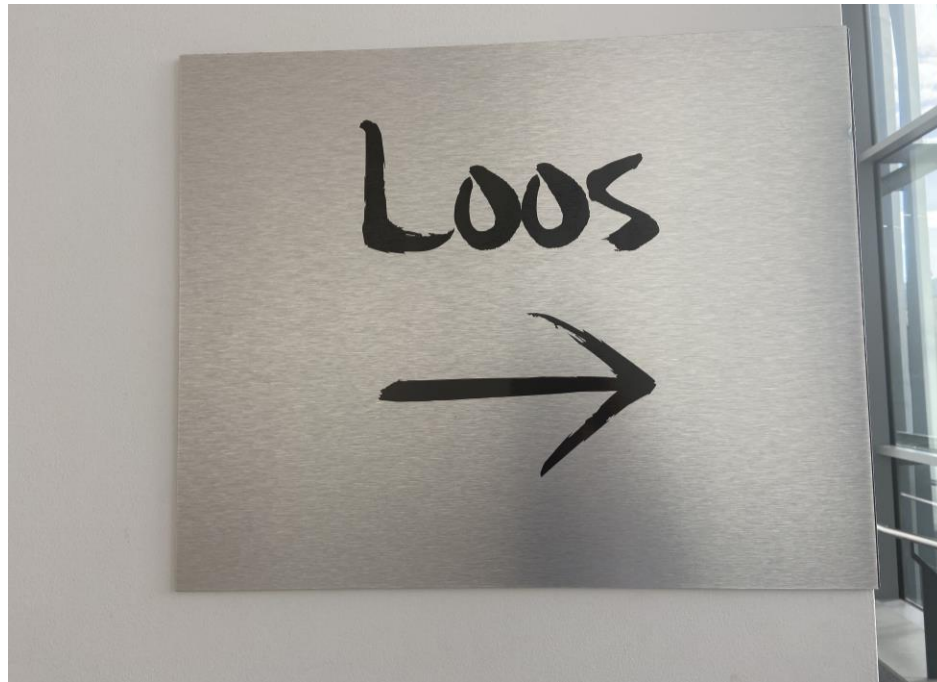
It might be busy going
up the stairs.

There are many ushers who can help me.
They work at the theatre.
They will be wearing t-shirts with the Lyric logo on them.



If I am lost or don't know where to go I can ask them.

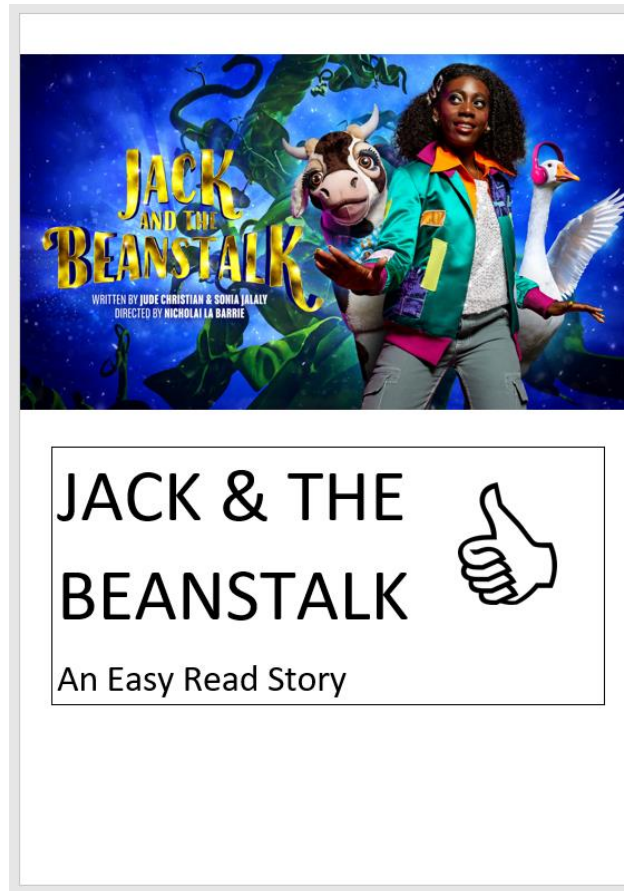
If I need the toilet I can look for this sign or ask an usher.



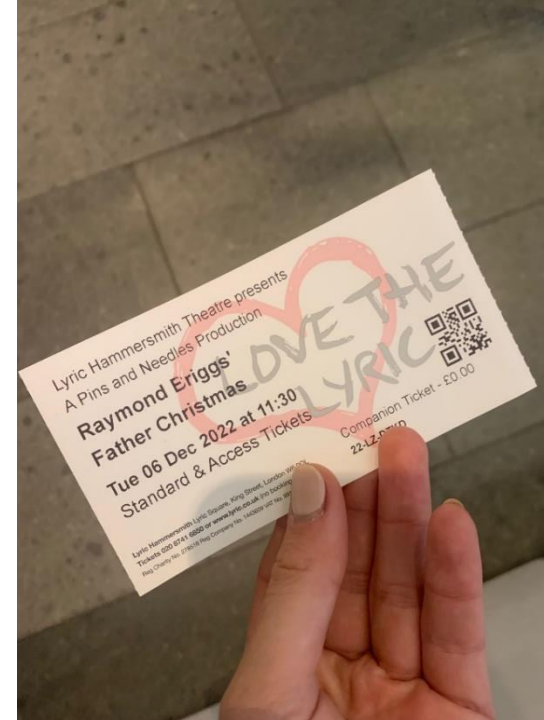
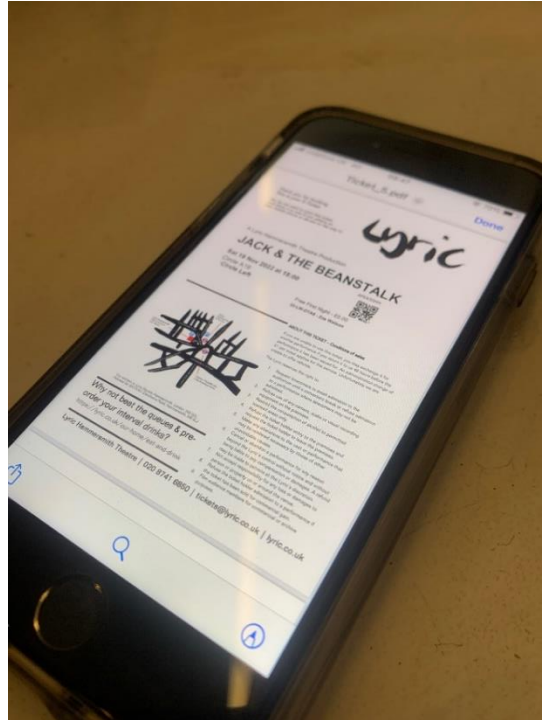
If I would like a drink or something to eat I can buy that at the bar.



I can pick up an Easy-Read Story to help me follow the story of the show. I can ask the usher for one.



I might have an e-ticket or I might have a paper ticket.
My ticket will have tell me where in the theatre my seat is.

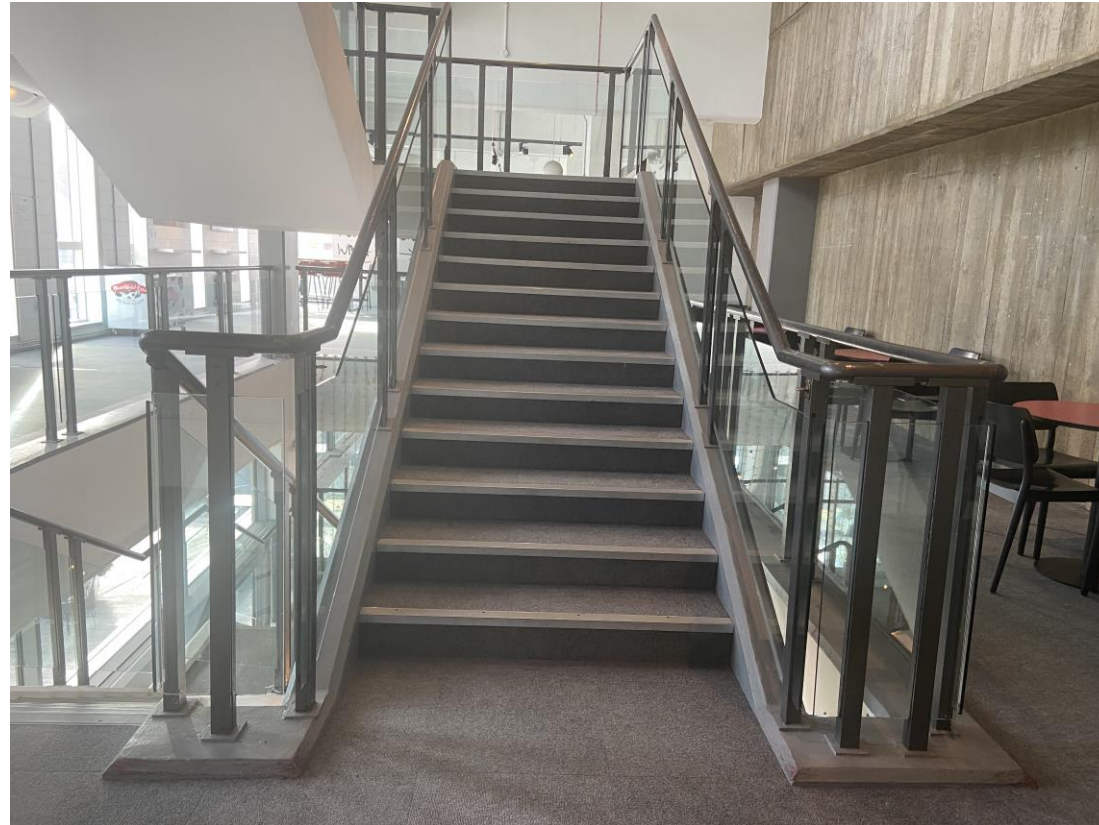


Stalls is the first level, circle is the second level,
upper circle is the third level.

I will walk up the stairs next to the bar to get to the seats in the theatre.



If my seats are in the circle or upper circle I will have to walk up one or two more flights of stairs.



An usher will show me where to go.

An usher will scan my ticket before I go into the theatre.



When I get to the right level an usher will tell me which side to enter the auditorium from.



I will then find my seat in the theatre based on the letter and number that is on my ticket.



Before the show starts the actors will come on stage and explain who they are and which character they are playing in the show.



The show will then start.
This is a Relaxed or Chilled Performance so I can make noise and move around the space if I want to.



If the performance is loud I can cover my ears or wear my headphones or ear plugs.



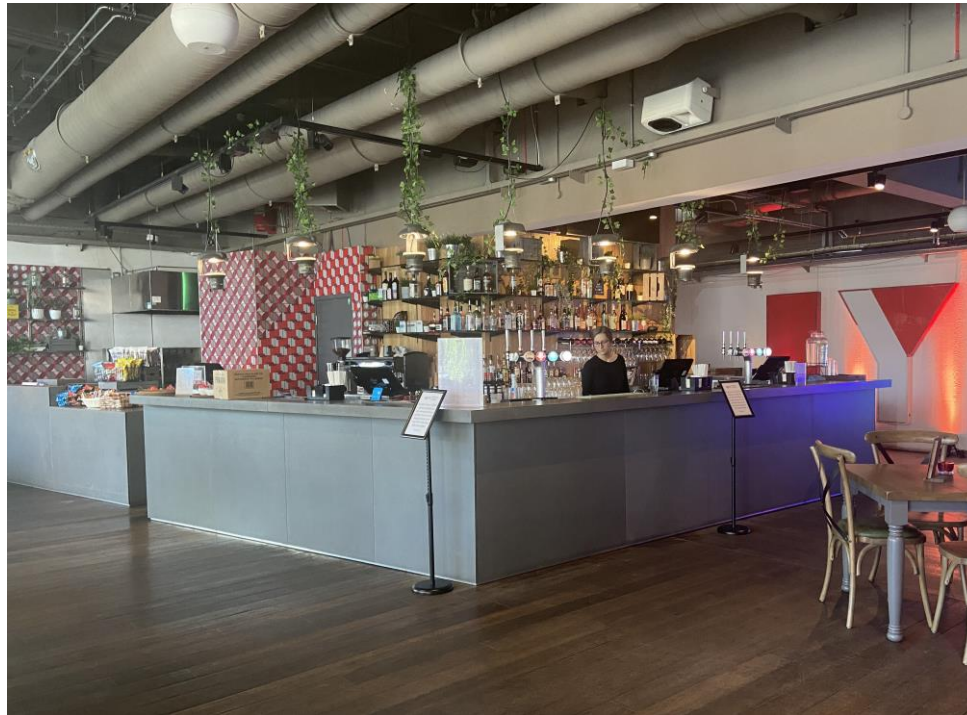
If I feel uncomfortable during the performance I can ask an usher to take me to the foyer or to a quiet room.



If I need to leave the auditorium there will be a quite space I can go to.



There is an interval during the show.
The show stops for 20 minutes
and the lights in the auditorium go on.



If I want to I can buy a drink at the bar.

If I want to, I can also buy an ice cream or sweets.



At the end of the interval I will hear a bell ring.
This is telling everyone to go back to their seats as the
show is about to re-start.



I will go back to my seat and the auditorium will go dark
again and everyone will be quiet.

If there is an emergency whilst I am in the theatre
I need to follow these signs:



At the end of the show people will clap. This tells the actors we liked the show. I can clap if I want to.



After the show I will go back out the theatre
the way I came in.



Thank you for coming to the theatre!

Lyric