



# Lyric Hammersmith Theatre Social Story

A visual guide to attending a  
Relaxed or Chilled performance in the Studio

I am going to the Lyric Hammersmith Theatre  
to see a show.

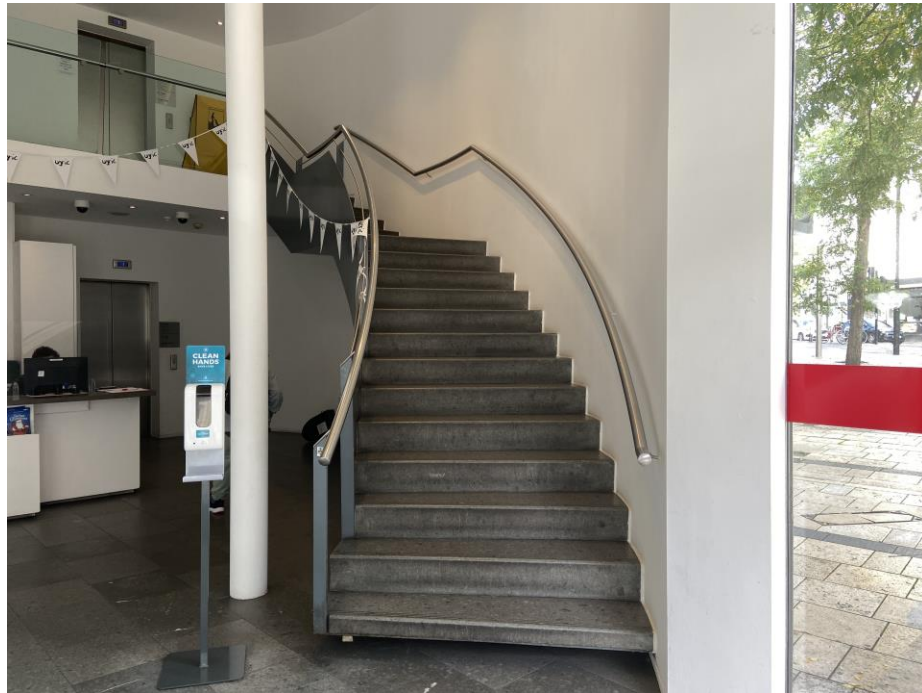


I will walk inside the theatre through the front door.  
I will enter Box Office which looks like this.



The Box Office is where I can buy a ticket or ask a question.

I will have to go up 2 floors to get to the theatre bar and theatre entrance.  
I can either take the stairs or use the lift.



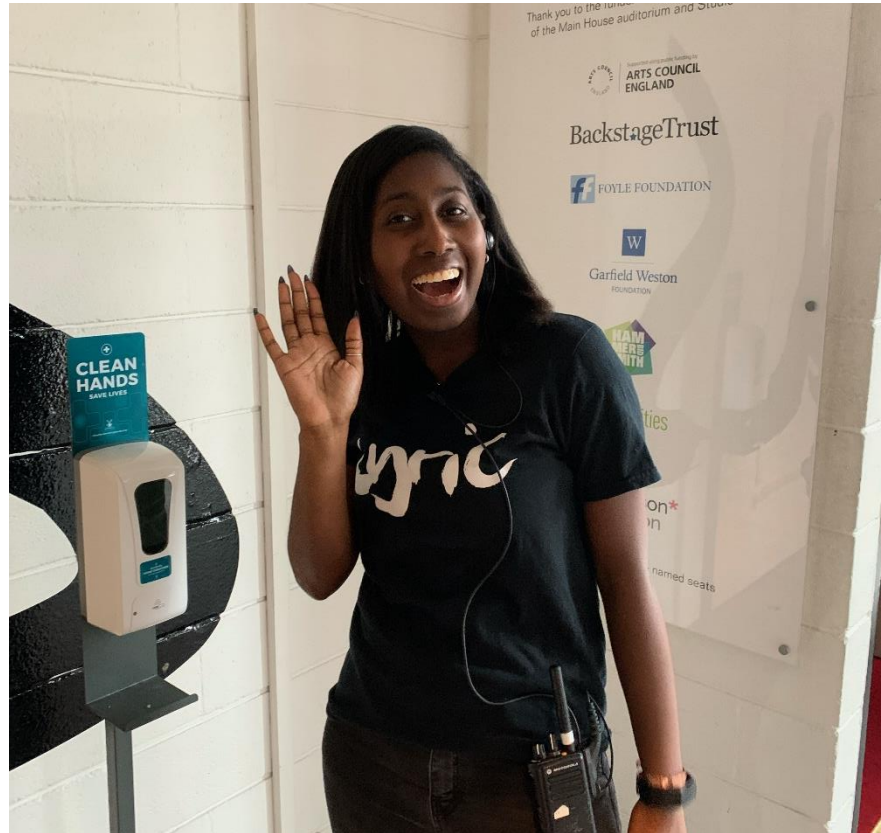


There will be lots of  
people going to see the  
show.

It might be busy going  
up the stairs.

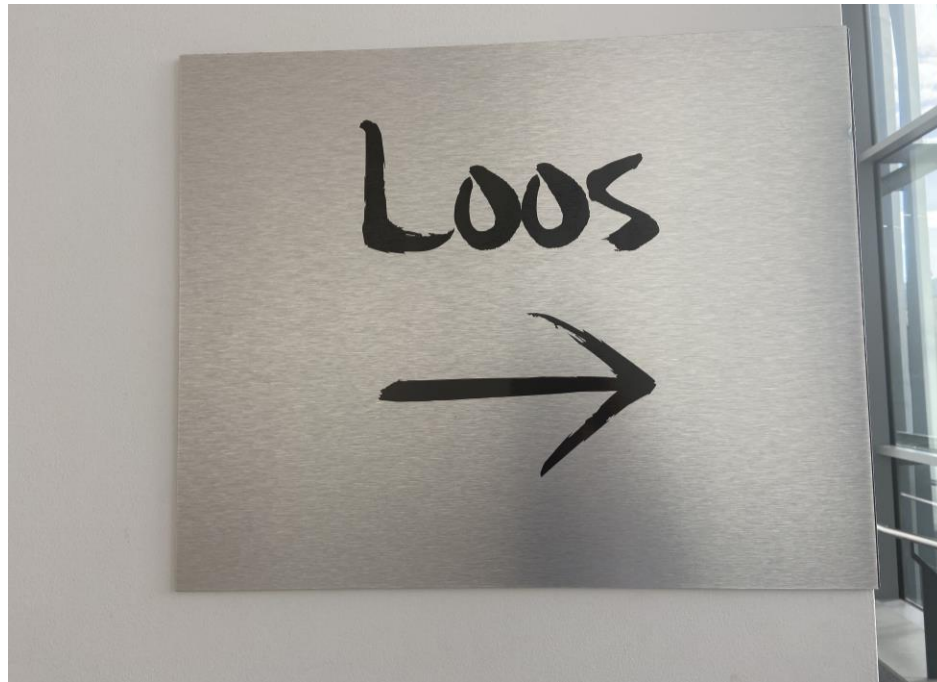


There are many ushers who can help me.  
They work at the theatre.  
They will be wearing t-shirts with the Lyric logo on them.



If I don't know where to go I can ask them.

If I need the toilet I can look for this sign or ask an usher.

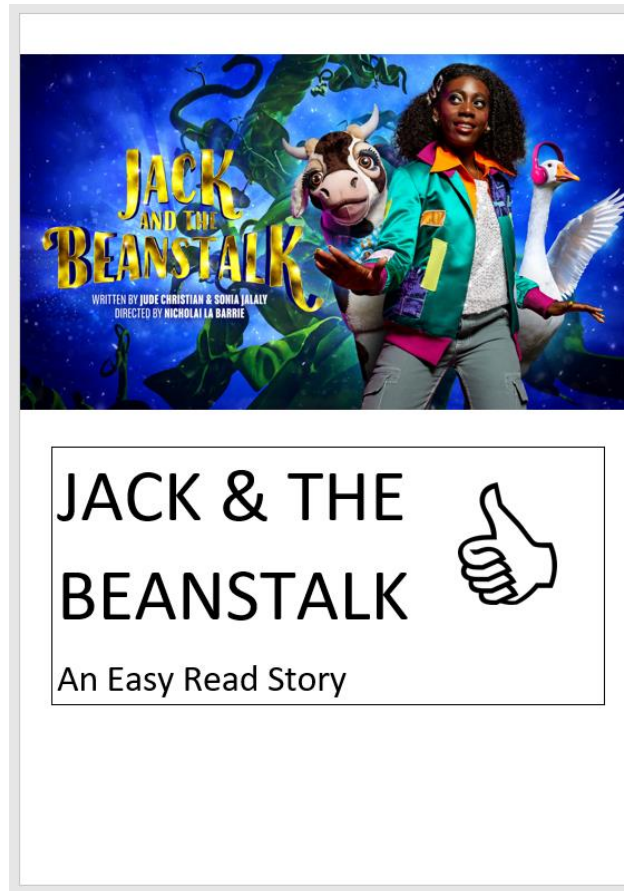


If I would like a drink or something to eat I can buy that at the bar.





I can pick up an Easy-Read Story to help me follow the story of the show. I can ask the usher for one.



I am going to see a show in the Studio.

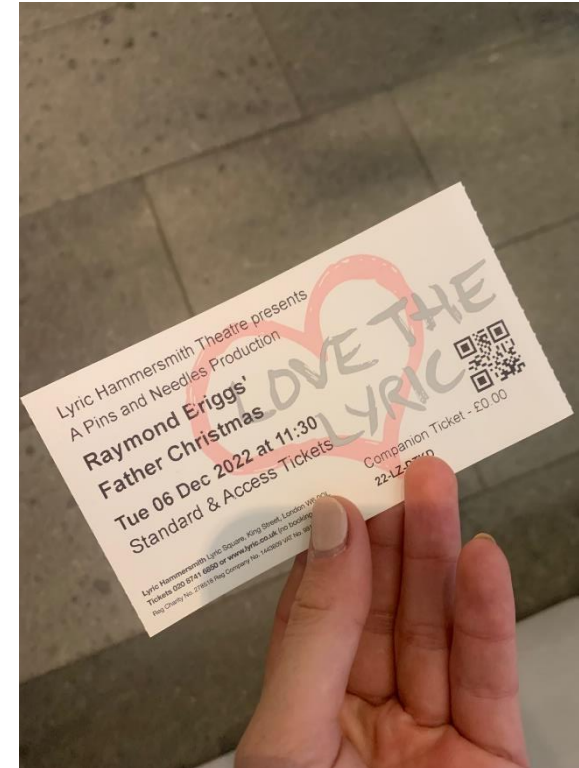
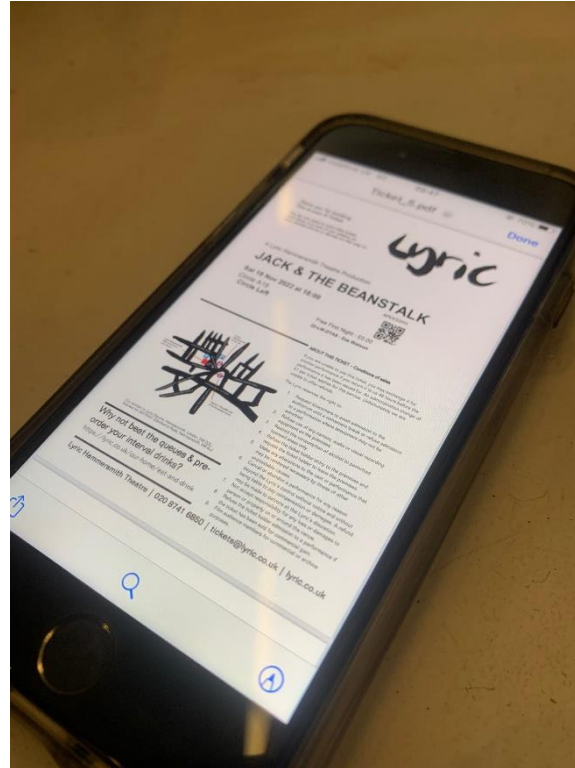


The Studio is on the same floor as the bar.  
There is a sign outside the door.

If I would like to buy sweets or an ice cream I can do that at the desk outside the door to the Studio.



I might have an e-ticket or I might have a paper ticket.

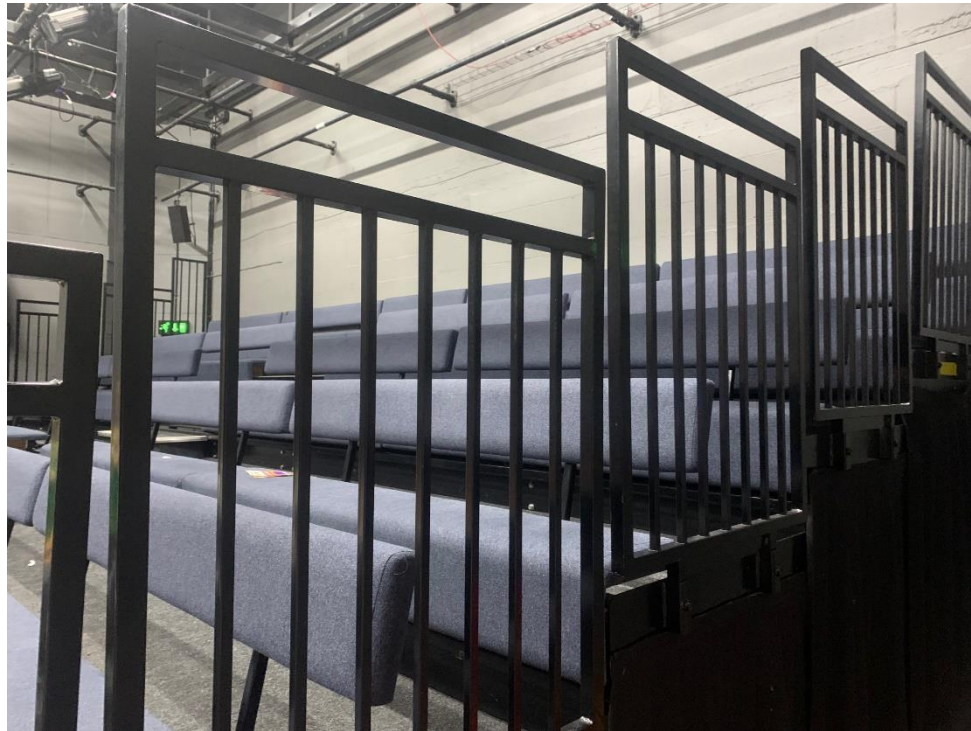




An usher will scan my ticket before I go into the Studio.



I can choose where I want to sit in the Studio.  
I can ask an usher if I need help.



Before the show starts the actors will come on stage and explain who they are and which character they are playing in the show.



The show will then start.  
This is a Relaxed or Chilled Performance so I can make  
noise and move around the space if I want to.





If the performance is loud I can cover my ears or wear my headphones or ear plugs.



If I feel uncomfortable during the performance I can ask an usher to take me to the foyer or to a quiet room.



If I need to leave the auditorium there will be a quite space I can go to.



If there is an emergency I need to follow these signs.





At the end of the show people will clap. This tells the actors we liked the show. I can clap if I want to.



After the show I will go back out the theatre  
the way I came in.



Thank you for coming to the theatre!

Lyric