



Lyric

# REHEARSAL SPACES FOR HIRE

AT THE LYRIC HAMMERSMITH THEATRE  
INFORMATION PACK



Rehearsal Room One is a multi-functional space which can be used for rehearsals, conferences, workshops and performances.

The space is located at the front of the building on the second floor, with passenger lift access.

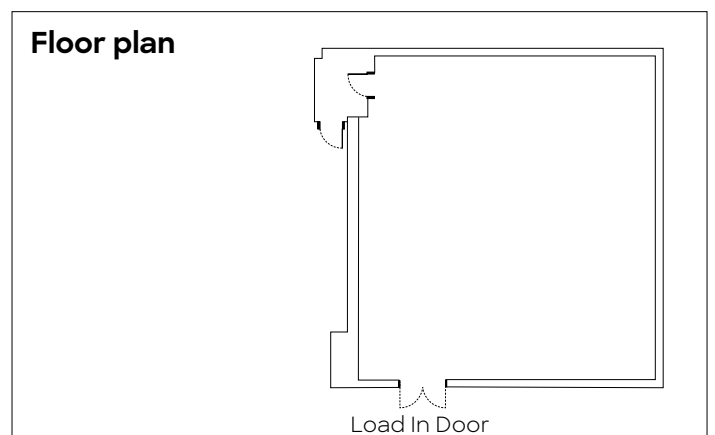
Included in the hire of Rehearsal Room One is the Tea & Talk Room which consists of a production office, bathroom / shower and green room.

#### DIMENSIONS

Room	Length (m)	Width (m)	Area (m <sup>2</sup> ) w / neg. space	Area (m <sup>2</sup> ) w / gangway + neg. space
Rehearsal Room 1	11.5	10.5	120.75	105

<b>Max standing capacity</b>	100
<b>Natural light</b>	Yes
<b>Direct goods lift access</b>	No
<b>Lighting rig</b>	Yes (subject to availability)
<b>Sound system</b>	Yes
<b>Sprung floor</b>	No
<b>Screw into floor</b>	No
<b>Wifi included</b>	Yes
<b>Access to tables &amp; chairs</b>	50 Chairs, 8 tables
<b>Achieve a blackout</b>	No
<b>Access to a kitchen</b>	Yes

#### Floor plan



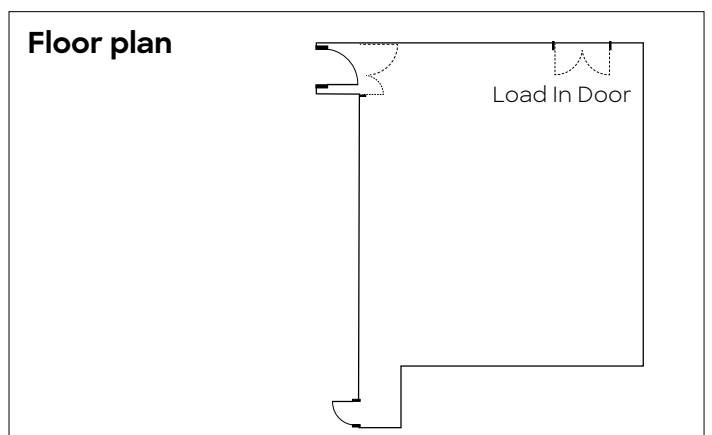


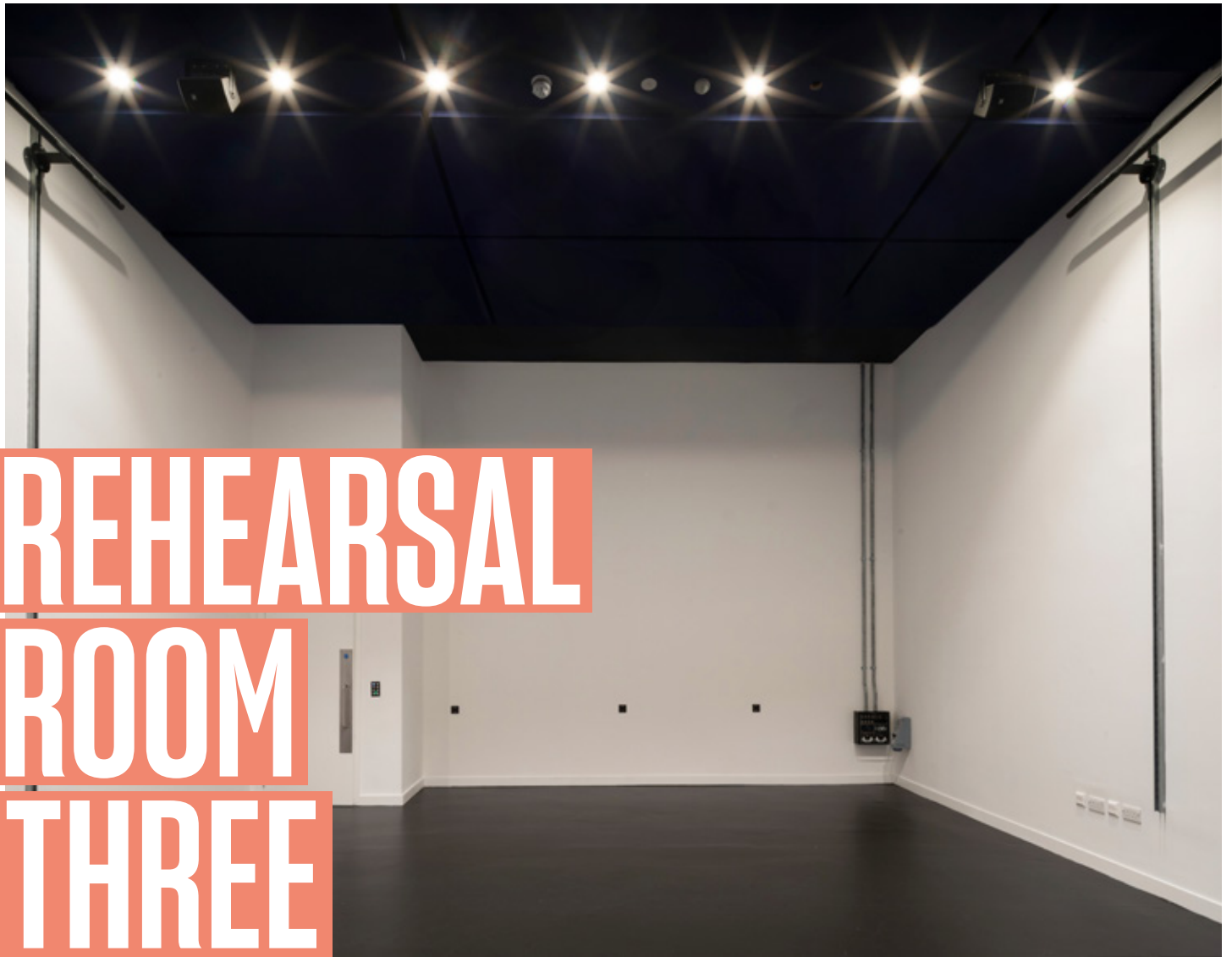
Rehearsal Room 2 is our largest rehearsal room with easy access to the goods lift. This space works well for rehearsals, presentations and press conferences.

#### DIMENSIONS

Room	Length (m)	Width (m)	Area (m <sup>2</sup> ) w / neg. space	Area (m <sup>2</sup> ) w / gangway + neg. space
Rehearsal Room 2	13.8	11.5	158.7	140

<b>Max standing capacity</b>	120
<b>Natural light</b>	Yes
<b>Direct goods lift access</b>	Yes
<b>Lighting rig</b>	Yes (subject to availability)
<b>Sound system</b>	Yes
<b>Sprung floor</b>	No
<b>Screw into floor</b>	Yes
<b>Wifi included</b>	Yes
<b>Access to tables &amp; chairs</b>	40 Chairs, 6 tables
<b>Achieve a blackout</b>	No
<b>Access to a kitchen</b>	No





# REHEARSAL ROOM THREE

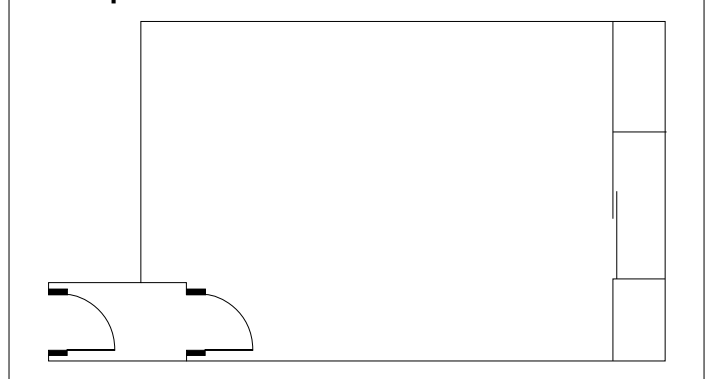
Newly refurbished Rehearsal Room 3 is perfect for small productions or as an addition to the larger rehearsal rooms. Ideal for music calls, dance calls and use as wardrobe.

## DIMENSIONS

Room	Length (m)	Width (m)	Area (m <sup>2</sup> ) w / neg. space	Area (m <sup>2</sup> ) w / gangway + neg. space
Rehearsal Room 3	8.7	6.7	58.29	47

<b>Max standing capacity</b>	70
<b>Natural light</b>	No
<b>Direct goods lift access</b>	No
<b>Lighting rig</b>	No
<b>Sound system</b>	No
<b>Sprung floor</b>	No
<b>Screw into floor</b>	No
<b>Wifi included</b>	Yes
<b>Access to tables &amp; chairs</b>	20 Chairs, 3 tables
<b>Achieve a blackout</b>	Yes
<b>Access to a kitchen</b>	No

## Floor plan



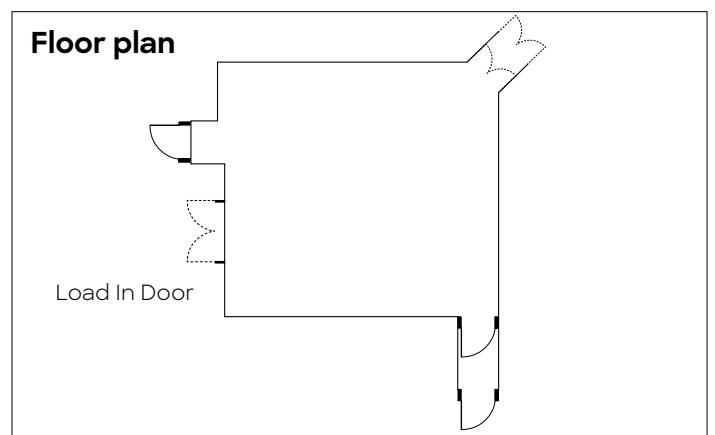


The Studio is an ideal space for rehearsals, performances, presentations and workshops. With direct access to the goods lift and high ceilings the Studio is perfect for mid-sized rehearsals.

#### DIMENSIONS

Room	Length (m)	Width (m)	Area (m <sup>2</sup> ) w / neg. space	Area (m <sup>2</sup> ) w / gangway + neg. space
Studio	11.8	10.8	127.44	111

<b>Max standing capacity</b>	80
<b>Natural light</b>	No
<b>Direct goods lift access</b>	Yes
<b>Lighting rig</b>	Yes (subject to availability)
<b>Sound system</b>	Yes
<b>Sprung floor</b>	No
<b>Screw into floor</b>	No
<b>Wifi included</b>	Yes
<b>Access to tables &amp; chairs</b>	20 Chairs, 0 tables
<b>Achieve a blackout</b>	Yes
<b>Access to a kitchen</b>	No





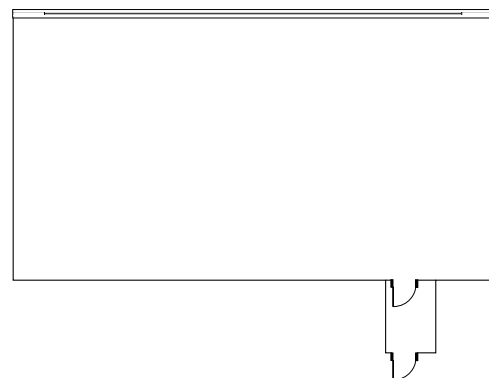
A modern and bright Dance Studio to hire for dance workshops and rehearsals. It boasts natural light, a wall of mirrors and ballet bars.

#### DIMENSIONS

Room	Length (m)	Width (m)	Area (m <sup>2</sup> ) w / neg. space	Area (m <sup>2</sup> ) w / gangway + neg. space
Dance Studio	7.9	13	102.7	86

<b>Max standing capacity</b>	30
<b>Natural light</b>	Yes
<b>Direct goods lift access</b>	No
<b>Lighting rig</b>	No
<b>Sound system</b>	Yes
<b>Sprung floor</b>	No
<b>Screw into floor</b>	No
<b>Wifi included</b>	Yes
<b>Access to tables &amp; chairs</b>	6 benches, 0 tables
<b>Achieve a blackout</b>	No
<b>Access to a kitchen</b>	No

#### Floor plan





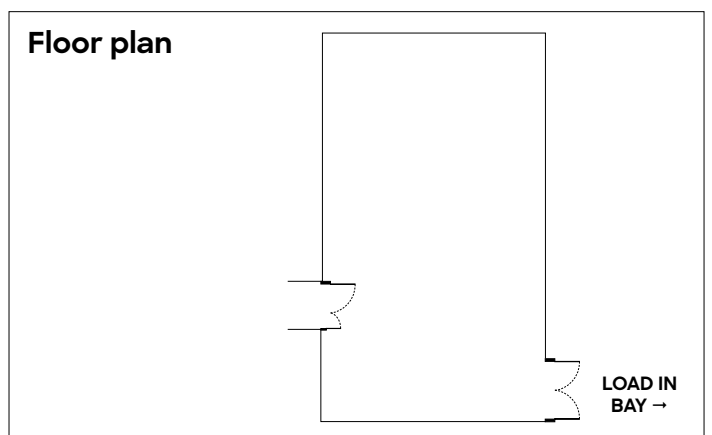
# FILM & TV STUDIO

A purpose-built Film & TV Studio with green screen and easy load in ideal for film & photography shoots and black box rehearsal space.

## DIMENSIONS

Room	Length (m)	Width (m)	Area (m <sup>2</sup> ) w / neg. space	Area (m <sup>2</sup> ) w / gangway + neg. space
Film & TV Studio	11.1	6.9	76.59	64

<b>Max standing capacity</b>	70
<b>Natural light</b>	No
<b>Direct goods lift access</b>	Yes
<b>Lighting rig</b>	Yes (subject to availability)
<b>Sound system</b>	Yes
<b>Sprung floor</b>	No
<b>Screw into floor</b>	No
<b>Wifi included</b>	Yes
<b>Access to tables &amp; chairs</b>	20 Chairs, 0 tables
<b>Achieve a blackout</b>	Yes
<b>Access to a kitchen</b>	No



# FAQs

## **Will I have access to the goods lift?**

Yes, you will have access to the goods lift so long as you have arranged this with the Events & Hires Manager prior to needing access.

## **Do you have equipment we can hire?**

As a producing theatre we have a range of equipment on site that can be hired subject to availability

## **Do I get a discount on food and drinks?**

Yes, all companies hiring spaces get a 20% discount at the bar.

## **What information do you need from me?**

Should you wish to book a space we will send you a booking form to complete with all relevant information for the hire.

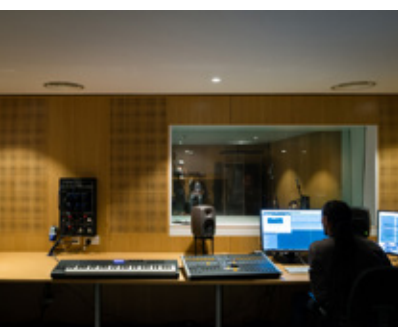
## **Is there parking?**

There isn't a car park at the venue. The nearest car park is Livat Car Park (W6 0BT).

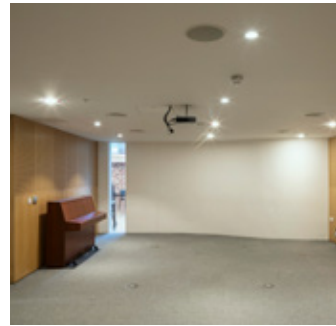
# ADDITIONAL SPACES

The Lyric Hammersmith Theatre has a range of multi-art facilities, including extra rehearsal spaces, a recording studio, music practice rooms and meeting suites.

If you would like to book any of these spaces in addition to or separate to your rehearsal room needs please let our events team know when making your enquiry.







# CONTACT DETAILS

## **Events & Hires Team**

hires@lyric.co.uk

020 8741 6850

## **Events & Bookings Assistant**

Ashley Quagraine-Mcvay

Ashley.quagraine-mcvay@lyric.co.uk

020 8741 6822 (ext. 438)